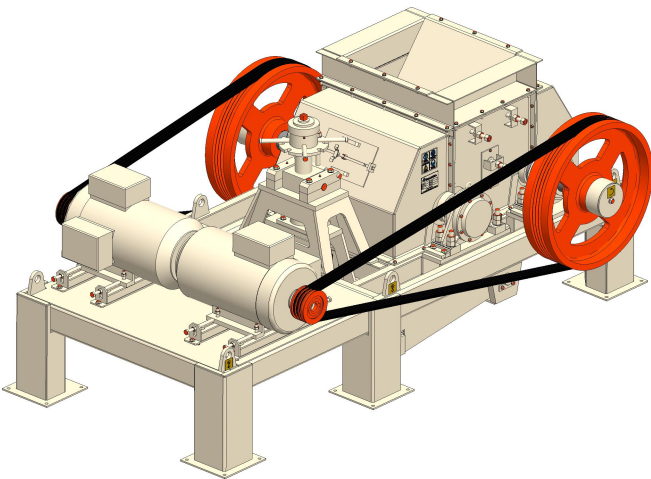
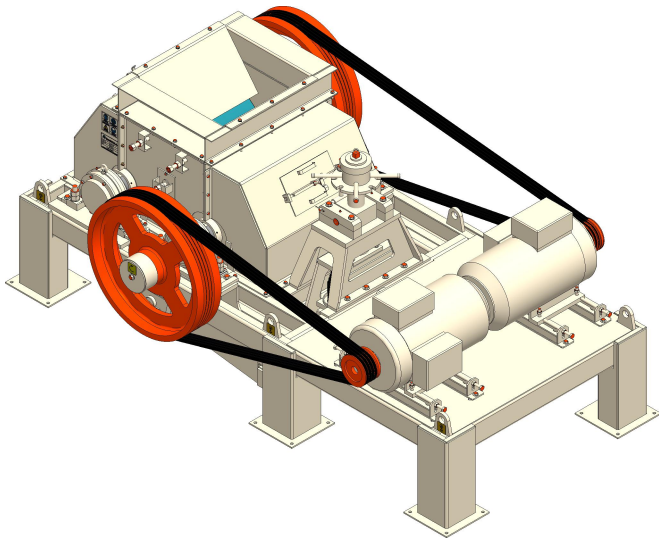


# Smooth Double Roll Crusher 800X800



## Salient Features

- Minimum Wear To Roll Cell Due To High Wear Resistance Material
- Fully Machined Roll Cell Gives High Performance and Equal Material Size Along the Width. Also Ease of Operation when Roll Cell Need to Get Changed.
- Roughed Frame Provides Higher Reliability
- Easy, Precise and Reliable Gap Setting (CSS) Mechanism for Floating Roll-Cell, Supported With High Capacity Springs for Sudden Load
- Heavy Duty Bearing & With Labyrinth System For Higher Durability

## Technical Detail

- Model Name : SDRC 0808
- Type : Smooth Double Roll Type
- Feed Opening (Width mm x Breath mm) : 800 x 800
- Roll-Cell Size (Diameter mm x Width mm) : 800 x 800
- Maximum Feed Size (mm) : 20
- Minimum Close Side Setting (mm) : 06
- Crusher Pulley RPM : 160
- Required Power (KW / HP) : 30 / 40 (720 RPM) X 2Nos. = 60 / 80

### Product Detail

Throughput Capacity : Upto 10-80

Roller Width (mm) : 400 to 1000

Roller Diameter (mm) : 400 to 1000



**Note:**  
Roll Crusher Size Can Be Decided By Customer Requirement To Meet Feed Size, Production Capacity Required & Feed To Discharge Ration.

Roll Crusher Is Used In Tertiary Stage With Lower Feed Size For Better Nipping.

Feed Size Depends On CSS Setting Maintaining The Ration Of 4 From Feed Size To CSS Setting.

Throughput Capacity Increases With Higher Roller Width And Lesser Reduction Ration.  
Feed Size Increases With The Increase Of Diameter Of The Roller.

The Fresh Feed Must Be Screened And Without Clays And Other Deleterious Material.

Throughput Capacity Is Calculated As Total Of Fresh Feed And Return Material From Screen.  
Final Production Depends On CSS Setting, Fresh Feed Quantity & Size & Screening Efficiency.

The Detail Including Display, Construction, Technical Information, Etc. Are For Information Only And Subject To Change Without Prior Notice.

Scope Of Supply May Differ From The Display Presented Here And It Is Fully As Per The Commercial Offer.

### MAXWELL CRUSHTECH

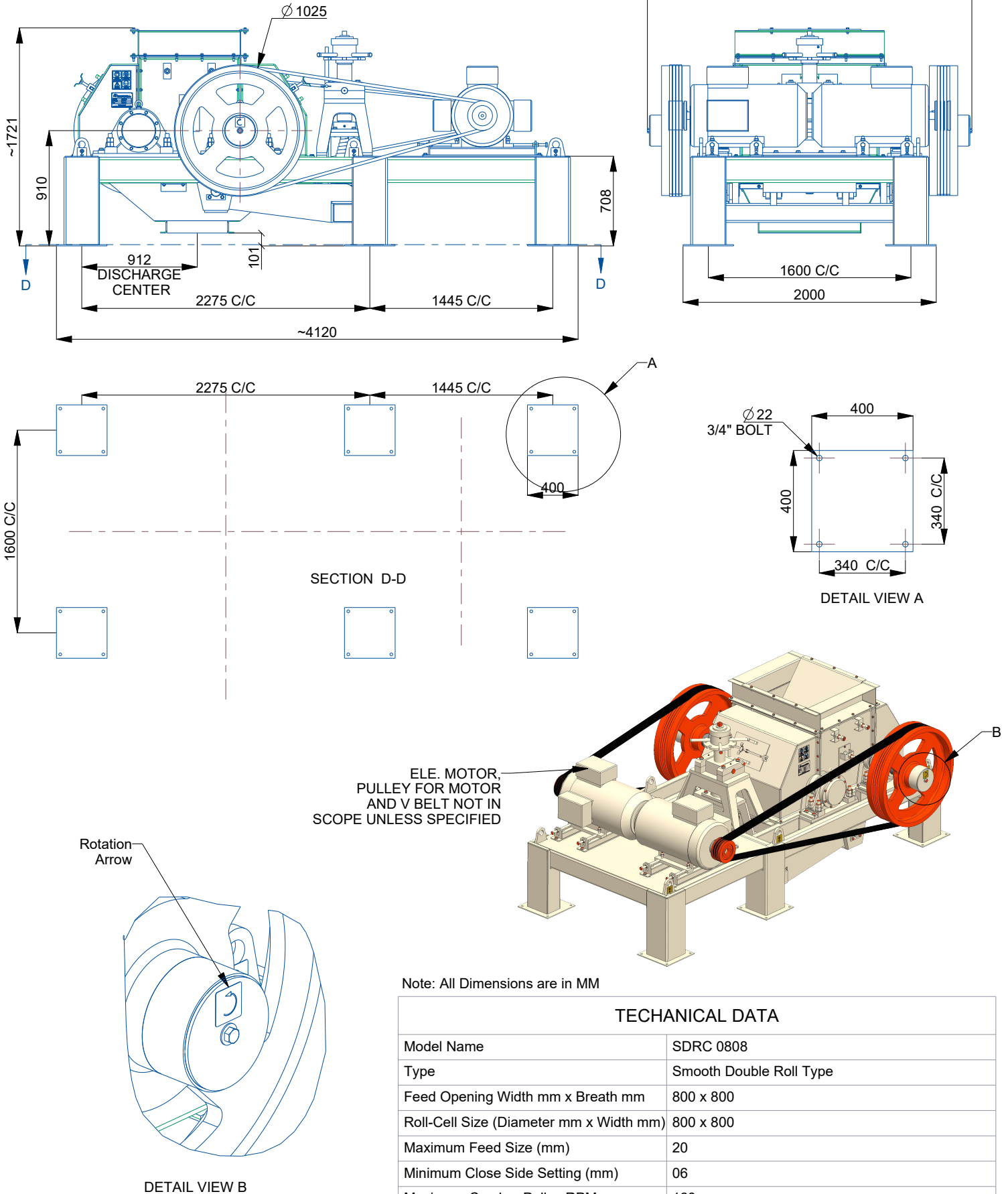
Unit-1: Block No.:188, Opp. Futura Engineering, Isand Road, At: Chhtral, Tal.: Kalol, Dist.: Gandhinagar, Gujarat-382729, INDIA.

Unit-2: 26, At.: Bibipura, Opp. Giriraj Petroleum, Tal.: Bayad, Dist.: Aravalli, Gujarat-383325, INDIA.

Mobile: +91-99251 25175 , +91-99252 45504

E-mail: maxwelldapatel@gmail.com , dpatel@maxwellcrushtech.com

### General Arrangement Drawing



Note: All Dimensions are in MM

#### TECHNICAL DATA

Model Name	SDRC 0808
Type	Smooth Double Roll Type
Feed Opening Width mm x Breath mm	800 x 800
Roll-Cell Size (Diameter mm x Width mm)	800 x 800
Maximum Feed Size (mm)	20
Minimum Close Side Setting (mm)	06
Maximum Crusher Pulley RPM	160
Required Power (KW / HP)	30 / 40 (720 RPM) x 2Nos. = 60 / 80
Motor (720 RPM) Pulley Size	224mm PCD X 4 Groove-SPC Section
Recommended V Belt Size	SPC 5780-4NOS, SPC 7260-4NOS

Note:  
The information including construction, technical detail are subject to change without prior notice. For latest information, please contact us.