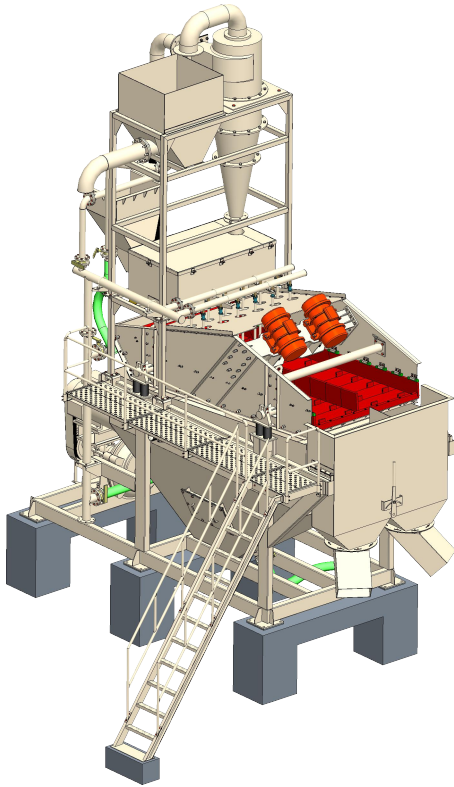


Hydro-Cyclon Sand Washing Plant 160

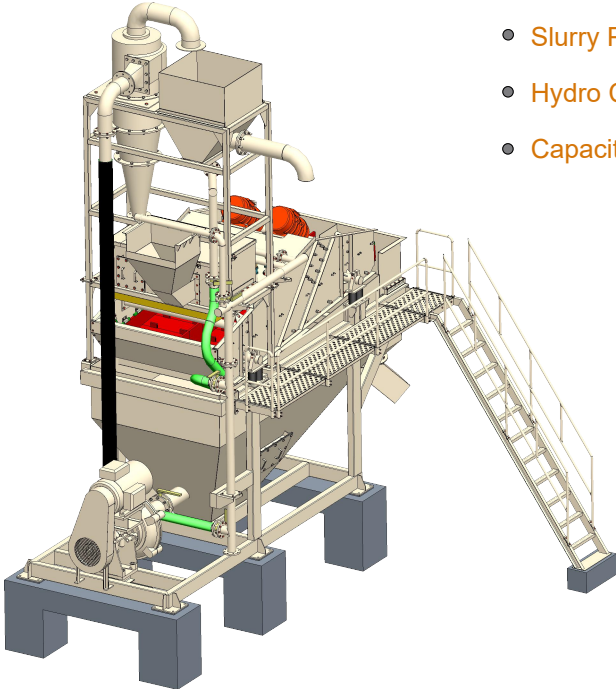


Salient Features

- High Performance Dewatering Screen Equipped With Long Life PU Mesh & Reliable Vibratory Motors
- Proven Cyclone design Assures Fine Removal, PU Lined Cyclone Gives Longer Durability
- Multi-Function Single Point Water Inlet provides Ease of Installation and Maintenance
- Slurry Distribution at Overhead Tank for Ease of Maintenance of Discharge Line
- User Friendly Compact Design

Technical Detail

- Model Name : MAX HWP 160
- Type : Hydro - Cyclone Type Sand Washing Plant With Provisions For P-Sand And M-Sand
- Dewatering Screen Size (Length mm x Width mm) : 4000 x 1800
- Dewatering Screen Power (KW / HP) : 14.2 (7.1X2) / 20(10X2)
- Slurry Pump Size Suction (inch) / Delivery (inch) : 8 / 6
- Slurry Pump Flow Rate (M3 / hr) : 250
- Slurry Pump Power (KW / HP) : 37.5 / 50
- Hydro Cyclone Size (mm) : 600
- Capacity (TPH) : 150 - 160



Note:

Capacity Is Based on 15% fines in Feed material Of Crush Sand. Capacity Varies Due To Feed Material Particle Size Gradation.

The Detail Including Display, Construction, Technical Information, Etc. Are For Information Only And Subject To Change Without Prior Notice.

Scope Of Supply May Differ From The Display Presented Here And It Is Fully As Per The Commercial Offer.

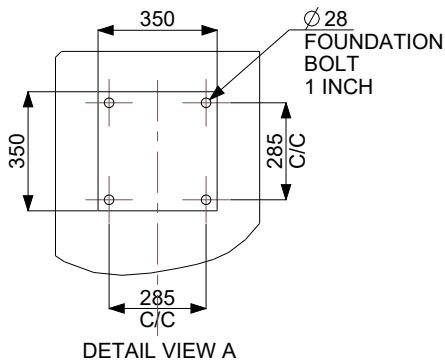
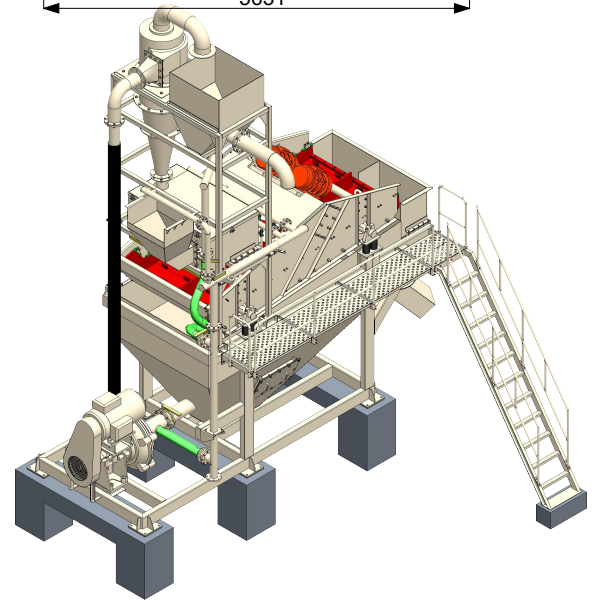
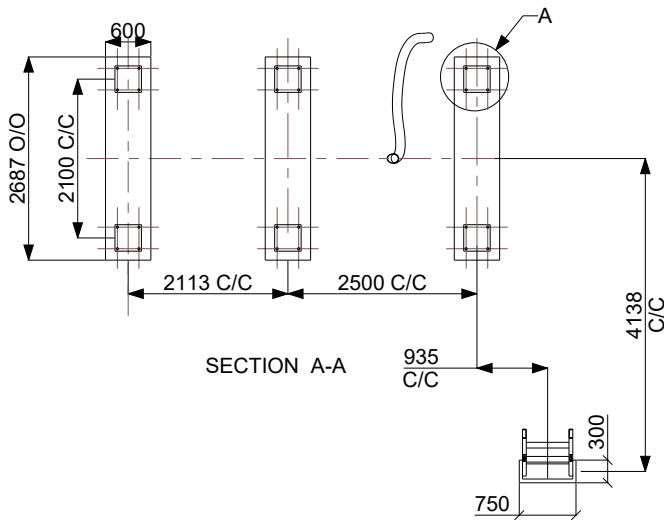
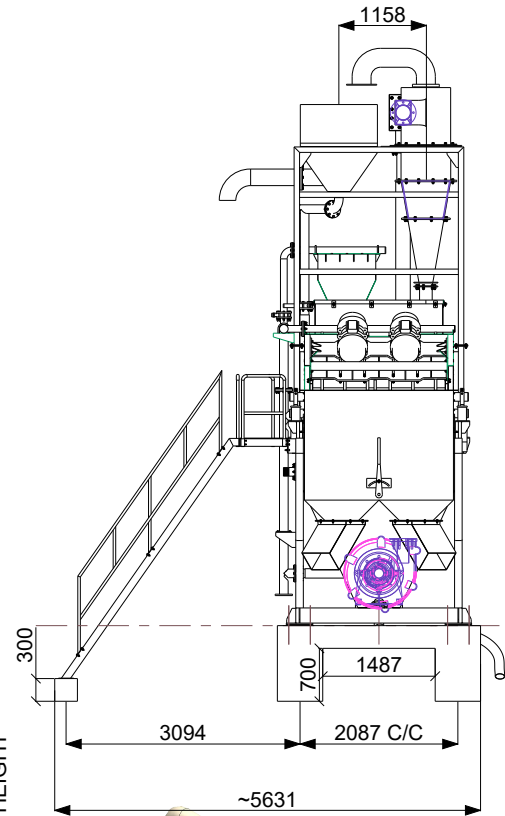
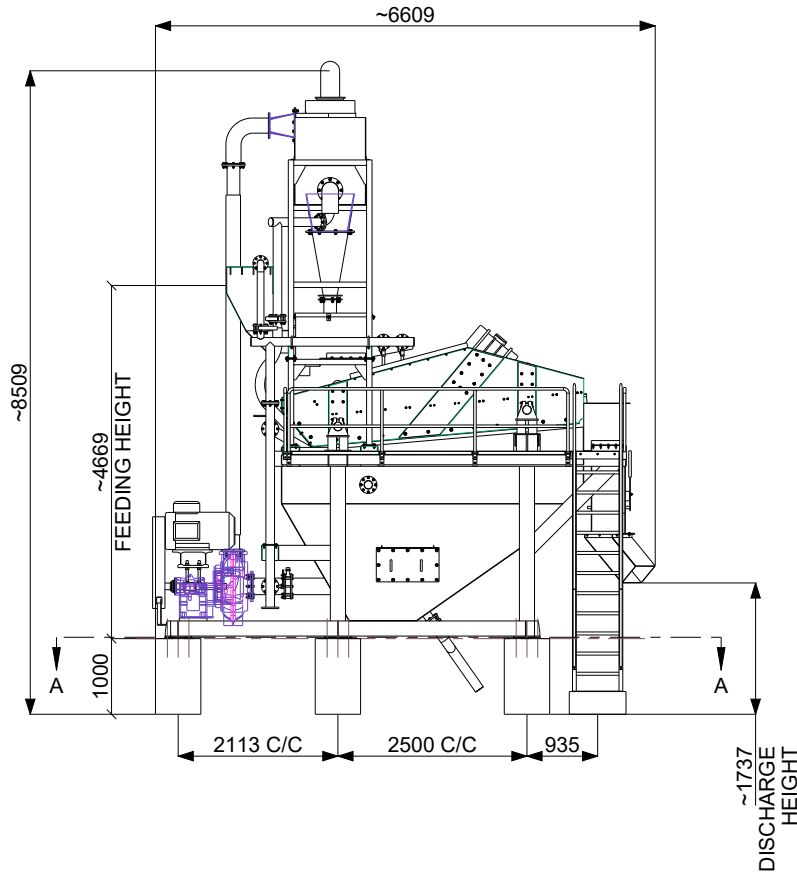
MAXWELL CRUSHTECH

Unit-1: Block No.:188, Opp. Futura Engineering, Isand Road, At: Chhtral, Tal.: Kalol, Dist.: Gandhinagar, Gujarat-382729, INDIA.

Unit-2: 26, At.: Bibipura, Opp. Giriraj Petroleum, Tal.: Bayad, Dist.: Aravalli, Gujarat-383325, INDIA.

Mobile: +91-99251 25175 , +91-99252 45504

E-mail: maxwelldapatel@gmail.com , dapatel@maxwellcrushtech.com



Note:
The Information Including Construction, Technical Detail
Are Subject To Change Without Prior Notice.
For Latest Information, Please Contact Us.

Note: All Dimensions are in MM

| TECHNICAL DATA | |
|---|---|
| Model Name | HWP 160 |
| Type | Hydro - Cyclone Type Sand Washing Plant With Provisions For P-Sand And M-Sand |
| Dewatering ScreenSize (Length mm x Width mm) | 4000 x 1800 |
| Dewatering Screen Power (KW / HP) | 14.2 (7.1X2) / 20 (10X2) |
| Slurry Pump Size Suction (inch) / Delivery (inch) | 8 / 6 |
| Slurry Pump Flow Rate (M ³ / HR) | 250 |
| Slurry Pump Power (KW / HP) | 37 / 50 |
| Hydro Cyclone Size (mm) | 600 |
| Capacity TPH) | 150 - 160 |